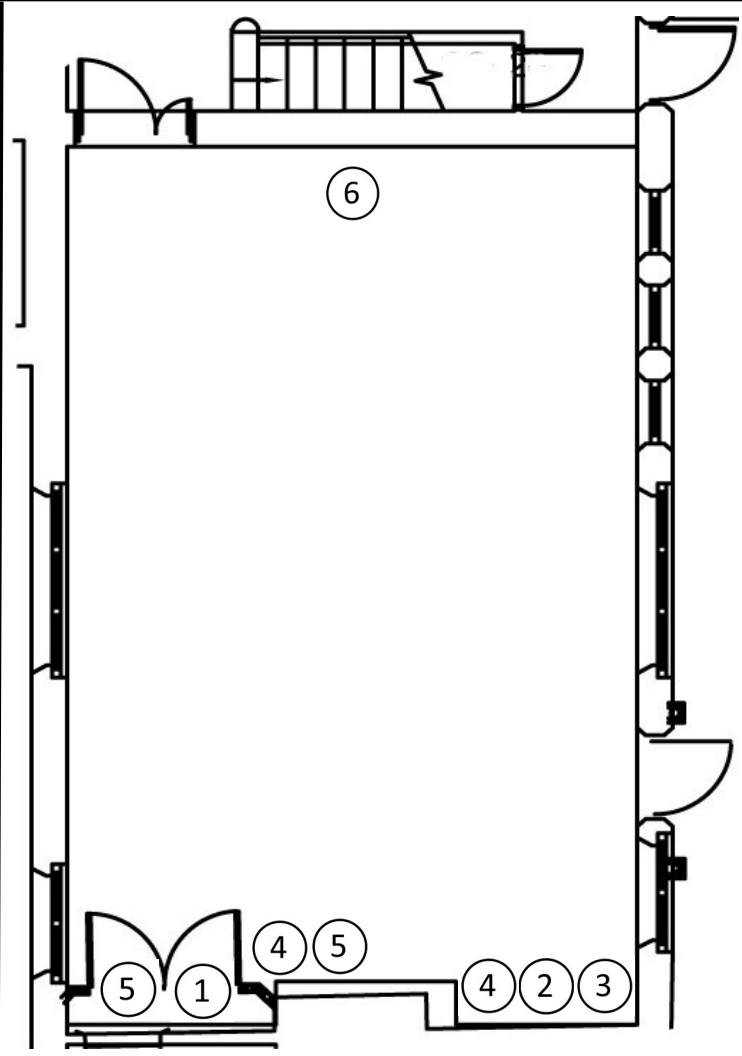




Dimensions: 9.5m x 6.5m
Capacity: 30

Times of use:
Mon-Thurs 9am—10:00pm
Fri: 8:30am—4:00pm

Fire Alarm test times:
Weekly: Wednesday 2:30pm



1. Handrails
2. Control desk
3. Sound desk
4. Staging
5. Stepladders
6. Projection screen

Equipment & Furniture

- Stage Lamps & Control**
- 14 x 500w Fresnels
 - 6 x 500w
 - 2 x UV Cannons
 - 2 x 1k floods
 - 2 x 1k Fresnels
 - 1 x 24/48 lighting control desk
 - 1 x VDU monitor
- AV & Sound Equipment**
- 1 x Proel sound desk
 - 1 x DVD combi player
- Staging & Furniture**
- 20 x blue chairs
 - 6 x 2mx1m Maltbury staging with legs
 - 3 x 1mx1m Maltbury staging with legs
 - 2 x 2m handrails
 - 4 x 1m handrails
 - 1 x large stepladder
 - 1 x small stepladder

Important Information.

No food or drink is allowed anywhere in the performance spaces. Capped bottles of water are permitted.

Loud, amplified rehearsals may only take place after 5pm with the windows closed.

Only equipment on the room equipment list should be left in the room after each session. This includes staging.