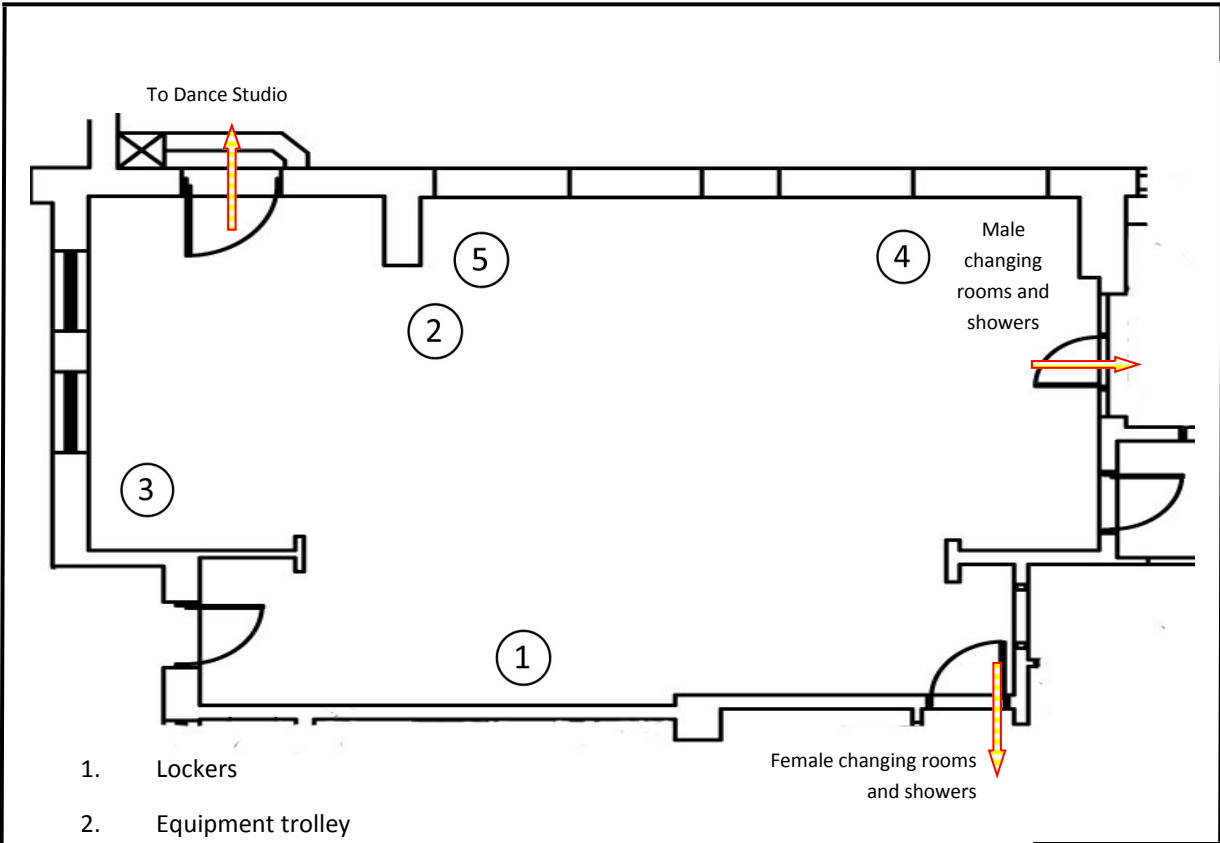




Dimensions: 7m x 10m
Capacity: 20

Times of use:
Mon-Thurs 9am—10:00pm
Fri: 8:30am—4:00pm

Fire Alarm test times:
Weekly: Wednesday 2:30pm



Equipment & Furniture

- 1 x Equipment trolley:
- mats
 - noodles
 - exercise balls

1. Lockers
2. Equipment trolley
3. Dance mat
4. Beanbag
5. Exercise ball

Important Information.

No food or drink is allowed anywhere in the performance spaces. Capped bottles of water are permitted.

Loud, amplified rehearsals may only take place after 5pm with the windows closed.

Only equipment on the room equipment list should be left in the room after each session. This includes staging.