

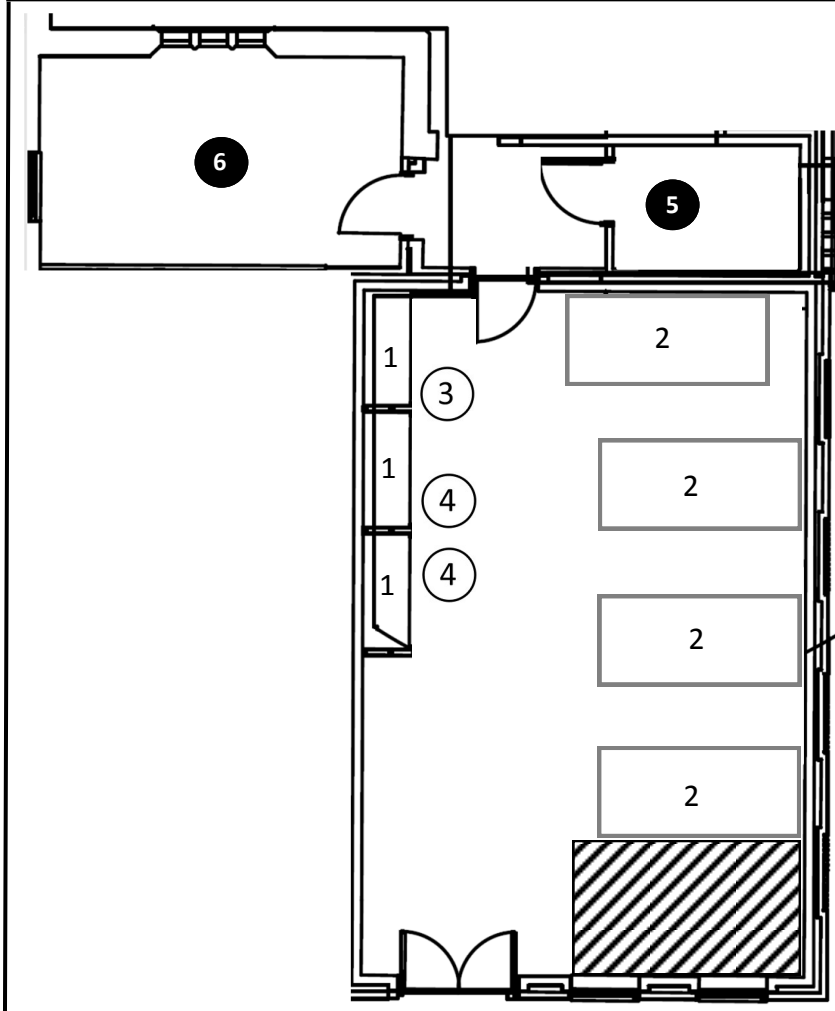
Prop Store (QS016)



Dimensions: N/A
Capacity: N/A

Times of use:
Mon-Thurs 9:am-5pm
Fri: 8:30am-4pm

Fire Alarm test times:
Weekly: Wednesday 2:30pm



1. Small prop storage
2. Large prop storage
3. Tallscope
4. Trolley storage
5. Wood store
6. External prop store

Equipment & Furniture

N/A

Important Information.
No food or drink is allowed anywhere in the performance spaces. Capped bottles of water are permitted.
Only equipment on the room equipment list should be left in the room after each session.