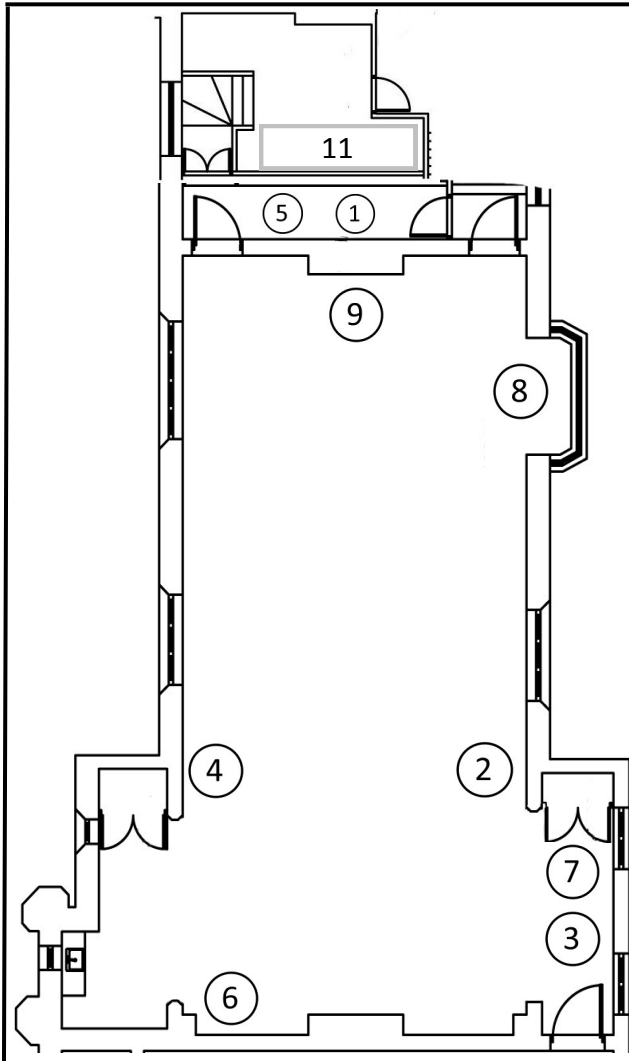




Dimensions: 11.6m x 7.5m
Capacity: 30

Times of use:
Mon-Thurs 9am—10:00pm
Fri: 8:30am—4:00pm

Fire Alarm test times:
Weekly: Wednesday 2:30pm



1. Flat screen TV
2. Portable screen
3. Projector stand
4. Sound desk
5. Chair
6. Decking
7. Staging blocks
8. Ladder
9. Piano
10. Lighting control
11. Theatre Company storage

Equipment & Furniture

Stage lamps & control
32x 500w fresnels.
11x 500w profiles.
1x lighting control desk.
1x VDU monitor.

AV Equipment
1x LG Flat Screen TV.
1x 6'x6' Portable screen.
1x Projector stand.

Sound Equipment
1x Proel sound desk.
1x CD player.
1x Soundcraft sound desk .

Staging & Furniture
70x Black Chairs.
Maltbury decking with legs & handrails.
1mx1m staging blocks with tops (various heights).
2x Book flats.
1x Ladder – Zarges.
A-Frame Piano.

Important Information.

No food or drink is allowed anywhere in the performance spaces. Capped bottles of water are permitted.

Loud, amplified rehearsals may only take place after 5pm with the windows closed.

Only equipment on the room equipment list should be left in the room after each session. This includes staging.