

How to use.....Noraxon EMG

Wireless connection

Place the green pack on the participant and turn it on.
Refresh the wireless connection and connect to Telemyo
(computer to computer)



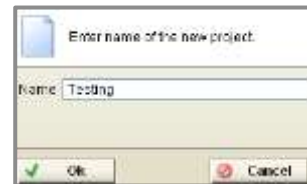
Programme selection

Open the Noraxon Master Edition




To prepare for measurement


Prepare project - Click  project, name the project then OK



Prepare subject

Click  subject add required information or choose an existing subject from the list in the top left section of the screen



Click on the green  action button in the bottom left corner to proceed to the measurement setup screen.


Selecting muscles for testing

Click on the muscles you wish to measure on the model on screen. You can change the view to distal if you require. These will now be shown in the channels section.

Ensure that the wires are inserted into the green pack in the corresponding channel as stated on the right of the screen.



The wire assigned to channel 1 is the trigger and therefore must have three attachments. Two electrodes will be placed on the selected muscle and the longer attachment must be placed on a bone close to the testing site. The two headed electrodes can be used for the other muscle sites. Secure all the wires are tape down to ensure there is no interference in the connection.

Click  in the bottom left corner of the screen to enter the measurement screen.

To load a measurement

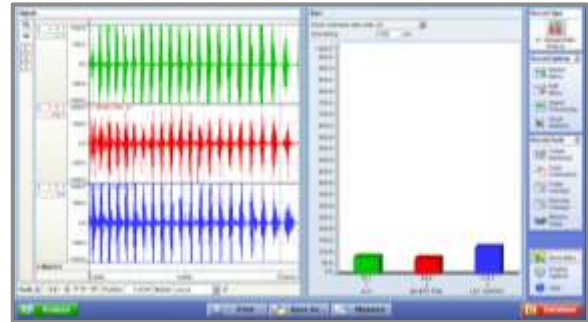
To enter the configuration menu, click on the **Load** button in the bottom panel or choose the **Application** and/or **Configuration** icon in the right side panel.

To start a measurement

Start the recording by clicking on the  green button in the bottom left corner. The text will change to **Finish**.

Click on the same button when you are ready to stop and save the recording.

This is an example of the results



Results

On completion of the test in the record options section click signal processing then rectification then ok.

Full wave rectification allows the absolute value of each data point to be used, which is the same as the absolute value of the raw data. The results will then be shown on the right of the screen for each muscle selected.



Trouble shooting

- **Will not connect** – Switch the button on the green pack off and then on. Refresh the wireless connection and try again.
- **Unexpected data** – If one or more muscle site is not showing the results you expect check that the wire is in the correct channel. Also check the placement and contact of the electrode. If the results are still not as you expect there could be a problem with the wire – speak to a technician.